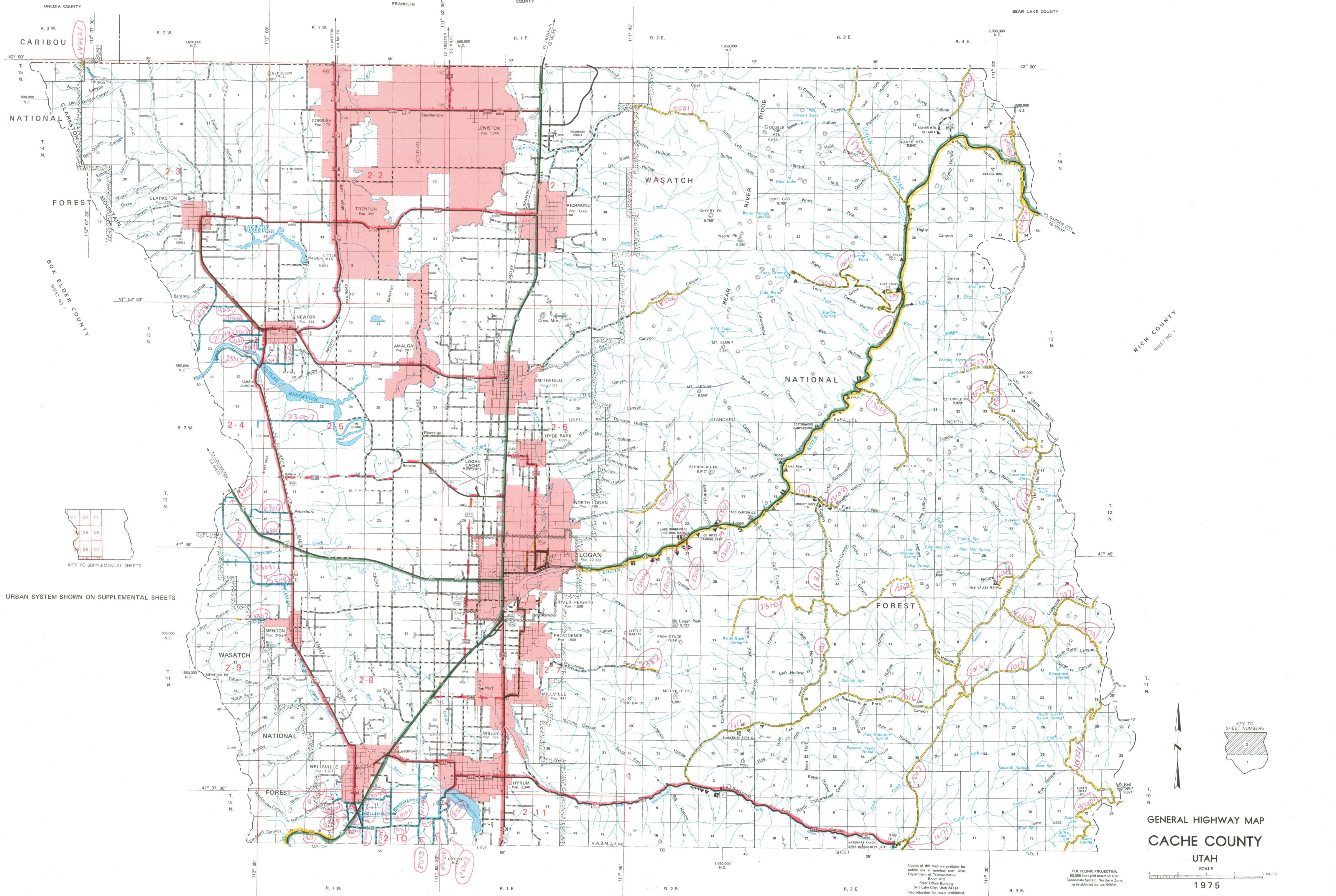


I D A H O

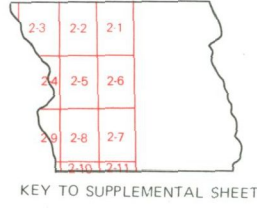


ONEDIA COUNTY
CARIBOU
R. 3 W.
R. 2 W.
R. 1 W.
R. 1 E.
R. 2 E.
R. 3 E.
R. 4 E.

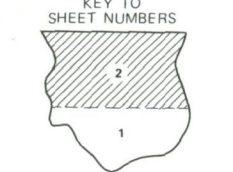
NATIONAL FOREST
WOODMOUNT
BOX ELDER COUNTY
SHEET NO. 7

BEAR LAKE COUNTY

RICH COUNTY
SHEET NO. 1



URBAN SYSTEM SHOWN ON SUPPLEMENTAL SHEETS

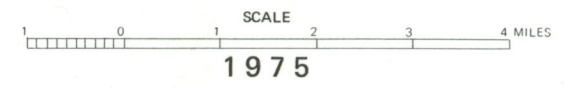
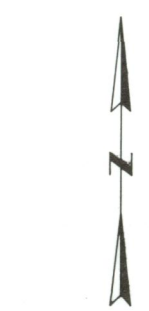
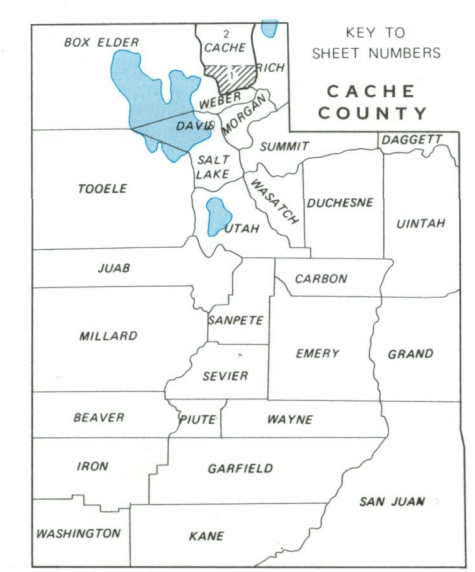
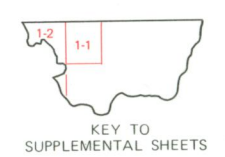
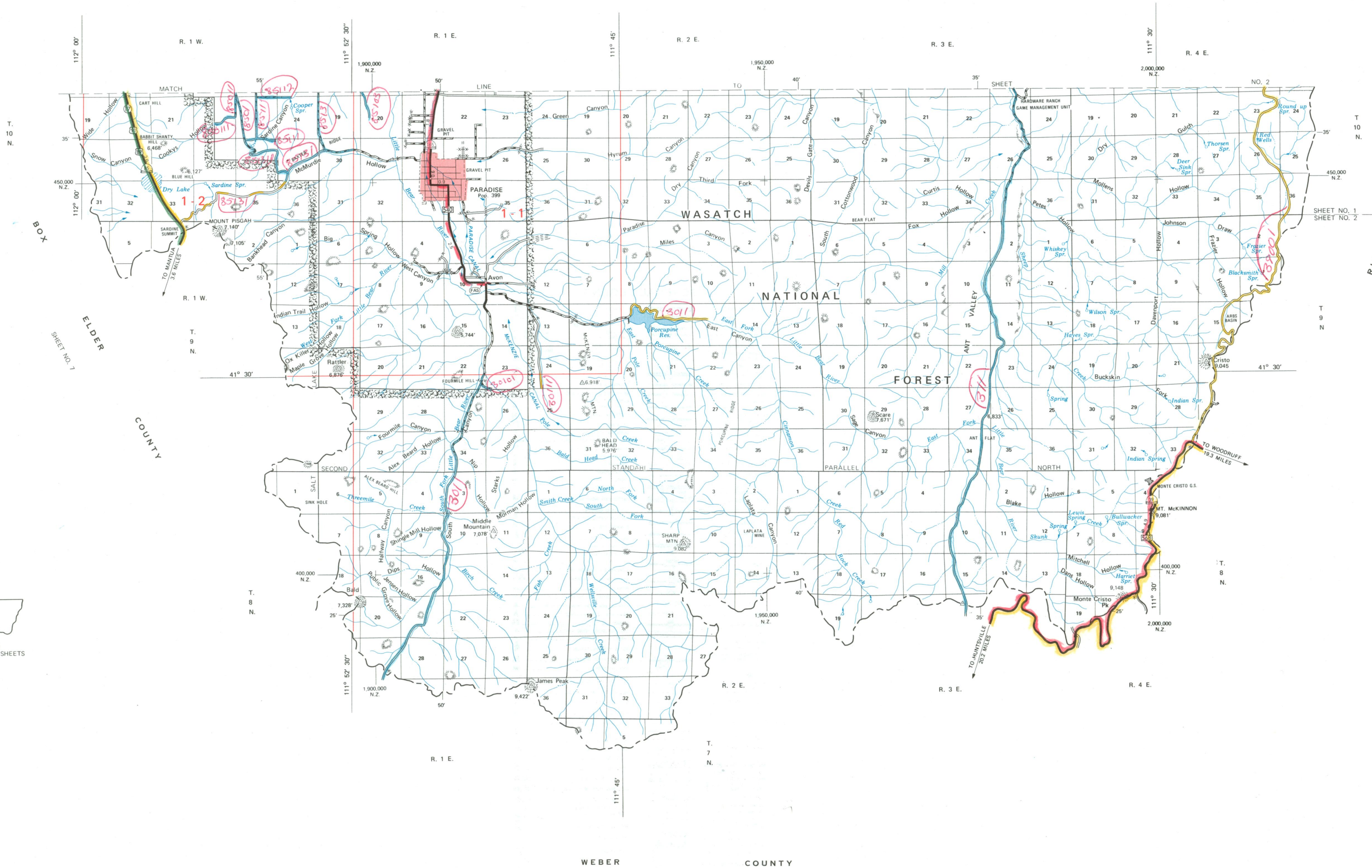


GENERAL HIGHWAY MAP
CACHE COUNTY
UTAH

SCALE
1975

Copies of this map are available for public use at nominal cost, Utah Department of Transportation, Room 812, State Office Building, Salt Lake City, Utah 84114. Reproduction for resale prohibited.

POLYCONIC PROJECTION
50,000 foot grid based on Utah Coordinate System, Northern Zone, as established by the NGA.



GENERAL HIGHWAY MAP CACHE COUNTY UTAH

PREPARED BY THE
UTAH DEPARTMENT OF TRANSPORTATION
TRANSPORTATION PLANNING DIVISION
PLANNING STATISTICS SECTION
IN COOPERATION WITH THE
U.S. DEPARTMENT OF TRANSPORTATION
FEDERAL HIGHWAY ADMINISTRATION

Copies of this map are available for public use at nominal cost. Utah Department of Transportation, Room 612, State Office Building, Salt Lake City, Utah 84114. Reproduction for resale prohibited.

MERCATOR PROJECTION
50,000 foot grid based on Utah Coordinate System, Northern Zone, as established by the NGS.

GENERAL HIGHWAY MAP APPROVED: JULY 9, 1975